



Oxford Cambridge and RSA

Monday 02 November 2020 – Afternoon

GCSE (9–1) Physical Education

J587/01 Physical factors affecting performance

Time allowed: 1 hour

No extra materials are needed.



Please write clearly in black ink. **Do not write in the barcodes.**

Centre number

--	--	--	--	--

Candidate number

--	--	--	--

First name(s)

Last name

INSTRUCTIONS

- Use black ink. You can use an HB pencil, but only for graphs and diagrams.
- Write your answer to each question in the space provided. If you need extra space use the lined pages at the end of this booklet. The question numbers must be clearly shown.
- Answer **all** the questions.

INFORMATION

- The total mark for this paper is **60**.
- The marks for each question are shown in brackets [].
- Quality of extended response will be assessed in questions marked with an asterisk (*).
- This document has **16** pages.

ADVICE

- Read each question carefully before you start your answer.

Section A

Answer **all** the questions.

1 **Fig. 1** shows a footballer after they have kicked a ball.



Fig. 1

Name **one** agonist and **one** antagonistic muscle acting at the knee when performing the action in **Fig. 1**.

(a) Agonist: [1]

(b) Antagonist: [1]

2 Mobility is one component of a warm up that helps to increase the range of movement around a joint.

(a) Give an example of a warm up exercise a tennis player may perform to increase the range of movement in the shoulder.

..... [1]

(b) Give an example of a different type of warm up exercise a tennis player may perform to increase the range of movement in the hip.

..... [1]

(c) A tennis player will practise serves, volleys and other ground strokes before starting a game.

State the general term for this component of a warm up.

..... [1]

3 Muscular hypertrophy is a disease in which a performer loses strength.

Is this statement true or false? Draw a circle around your answer.

True

False

[1]

4 Which **one** of the following states the correct names for the two bones in the lower leg?

Put a tick (✓) in the box next to the correct answer.

- A Tibia and Fibia
- B Tibula and Fibia
- C Tibia and Fibula
- D Tibula and Fibula

[1]

5 Describe how the septum affects blood flow through the heart.

.....
..... [1]

6 Other than the ribs, name a bone that protects the heart and lungs when controlling the ball with your chest in football.

..... [1]

7 Describe the function of the intercostal muscles during inspiration.

.....
.....
..... [1]

8 Fig. 2 shows a diagram of the heart.

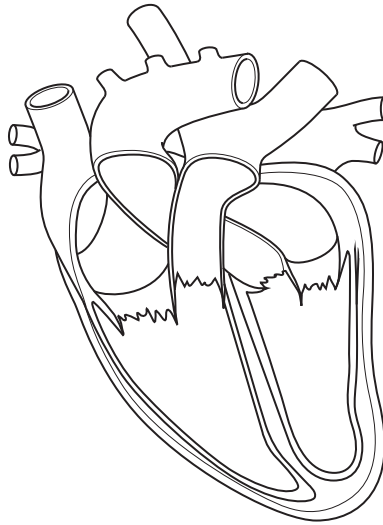


Fig. 2

(a) Using Fig. 2, draw an **X** to indicate the location of **one** of the semilunar valves. [1]

Valves help prevent the backflow of blood.

(b) The semilunar valves prevent blood flowing back into which part of the heart?

..... [1]

9 Which **one** of the following statements is **TRUE**?

Put a tick (✓) in the box next to the correct answer.

- A** A hazard in a swimming pool is a swimmer banging their head and suffering concussion
- B** Reversibility is when a performer completes a circuit training session backwards
- C** Heading the ball in football is an example of a third-class lever
- D** When bowling in cricket the humerus is an articulating bone at the shoulder and elbow

[1]

10 Fig. 3 shows some of the structures of the respiratory system.

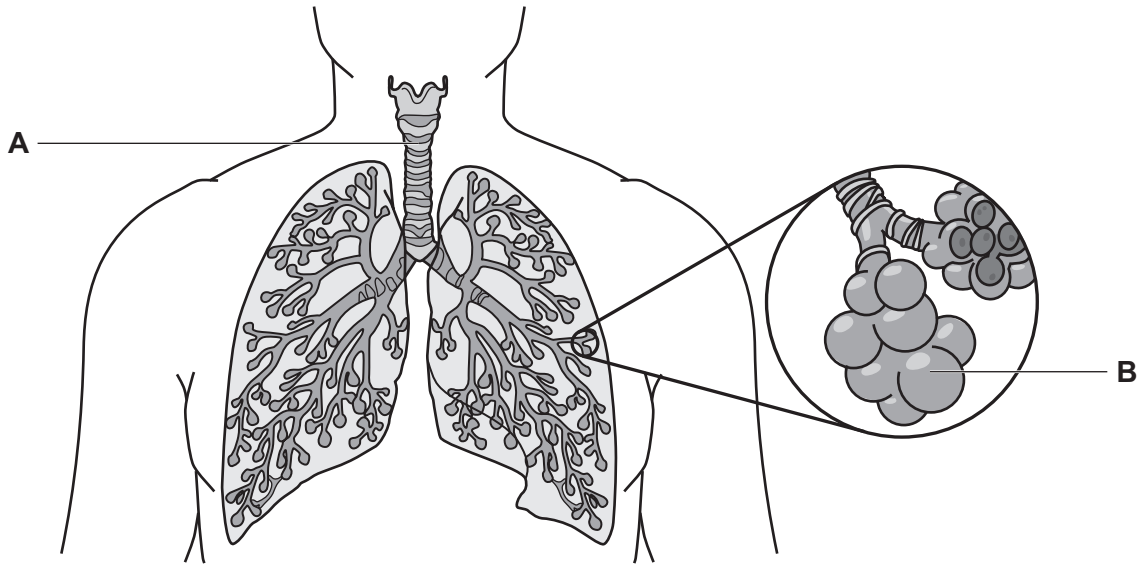


Fig. 3

Name the structures labelled **A** and **B**.

A =

B =

[2]

11 Name the plane of movement at the elbow during a biceps curl.

..... [1]

12 (a) Give **one** example of personal protective equipment used to reduce the risk of injury in physical activity and sport.

..... [1]

(b) Describe how the piece of equipment named in (a) may reduce the risk of injury.

.....

.....

..... [1]

13 Fig. 4 below shows a diagram of a knee joint.

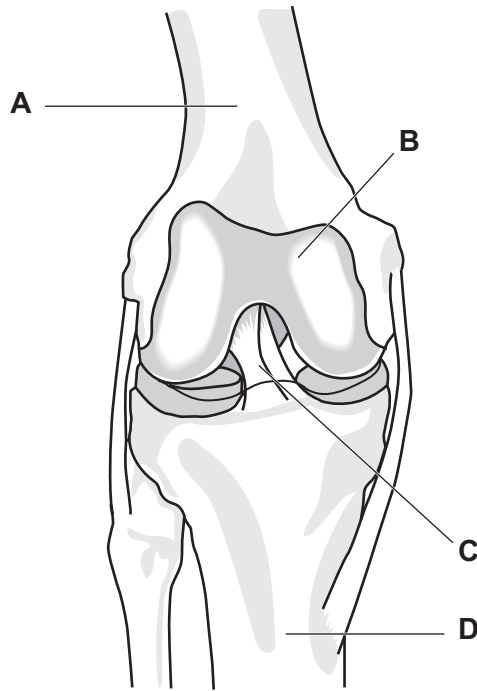


Fig. 4

(a) Which letter identifies the location of cartilage on the femur?

..... [1]

(b) Describe the role of this cartilage for a long jumper.

.....
..... [1]

14 **Table 1** shows the results for the wall throw test and the ruler test for four participants.

Performer	Wall throw test	Ruler test (cm)
Rehan	18	5
Gordon	33	12
Ella	9	22
Aisha	36	4

Table 1

Use **Table 1** to answer the following:

(a) Which participant has the slowest reaction time?

..... [1]

(b) Which participant has the best co-ordination?

..... [1]

15 Describe a cardiovascular benefit of performing a cool down.

.....
 [1]

16 HIIT is a type of training.

What does HIIT stand for?

..... [1]

17 Fig. 5 shows a line through the centre of the body that represents an axis of rotation.

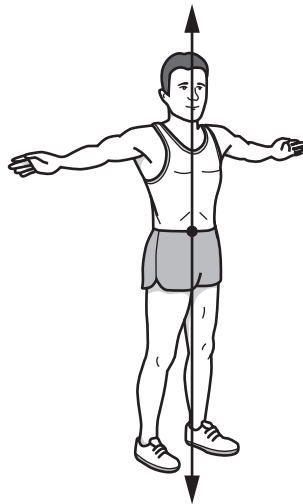


Fig. 5

(a) Which axis of rotation does Fig. 5 show?

..... [1]

(b) Give a practical example of a movement in sport or physical activity that uses this axis of rotation.

..... [1]

18 (a) Identify the fitness component that is measured by the press-up test.

..... [1]

(b) Use a practical example to show the importance of balance in physical activity or sport.

.....
..... [1]

19 Agility is the range of movement around a joint when sidestepping in rugby.

Is this statement true or false? Draw a circle around your answer.

True

False

[1]

20 Define cardiac output.

.....
..... [1]

A series of 25 horizontal dotted lines spanning the width of the page, providing a template for handwriting practice.

(c) One function of the skeleton is the production of red blood cells.

(i) Describe the role of red blood cells during a cross-country race.

.....
.....
.....
.....
.....
..... [2]

(ii) State **three** other functions of the skeleton during a cross-country race.

1.
2.
3. [3]

23 (a) (i) Using practical examples, compare the differences between first and second class levers.

.....
.....
.....
.....
.....
.....
.....
..... [4]

(ii) Explain how lever systems may have mechanical advantage.

.....
.....
..... [2]

(b) Define the following terms:

(i) Tidal volume:

..... [1]

(ii) Minute ventilation:

..... [1]

(c) Explain the effects of exercise on tidal volume and minute ventilation.

.....
.....
..... [2]

END OF QUESTION PAPER

ADDITIONAL ANSWER SPACE

If additional space is required, you should use the following lined page(s). The question number(s) must be clearly shown in the margin(s).

A large area of lined paper for writing. It consists of horizontal dotted lines spaced evenly down the page. A vertical solid line runs down the left side of the page, creating a margin. The entire area is intended for providing additional answer space for a question.

A large rectangular area for writing, bounded by a solid vertical line on the left and horizontal dotted lines on the top, bottom, and right.



Copyright Information

OCR is committed to seeking permission to reproduce all third-party content that it uses in its assessment materials. OCR has attempted to identify and contact all copyright holders whose work is used in this paper. To avoid the issue of disclosure of answer-related information to candidates, all copyright acknowledgements are reproduced in the OCR Copyright Acknowledgements Booklet. This is produced for each series of examinations and is freely available to download from our public website (www.ocr.org.uk) after the live examination series. If OCR has unwittingly failed to correctly acknowledge or clear any third-party content in this assessment material, OCR will be happy to correct its mistake at the earliest possible opportunity.

For queries or further information please contact The OCR Copyright Team, The Triangle Building, Shaftesbury Road, Cambridge CB2 8EA.

OCR is part of the Cambridge Assessment Group; Cambridge Assessment is the brand name of University of Cambridge Local Examinations Syndicate (UCLES), which is itself a department of the University of Cambridge.